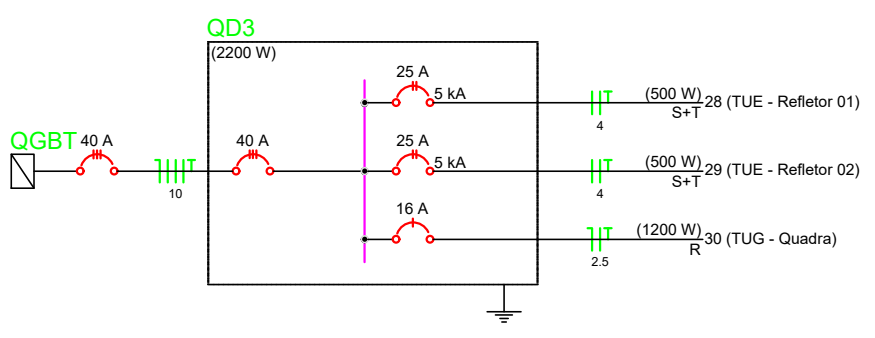
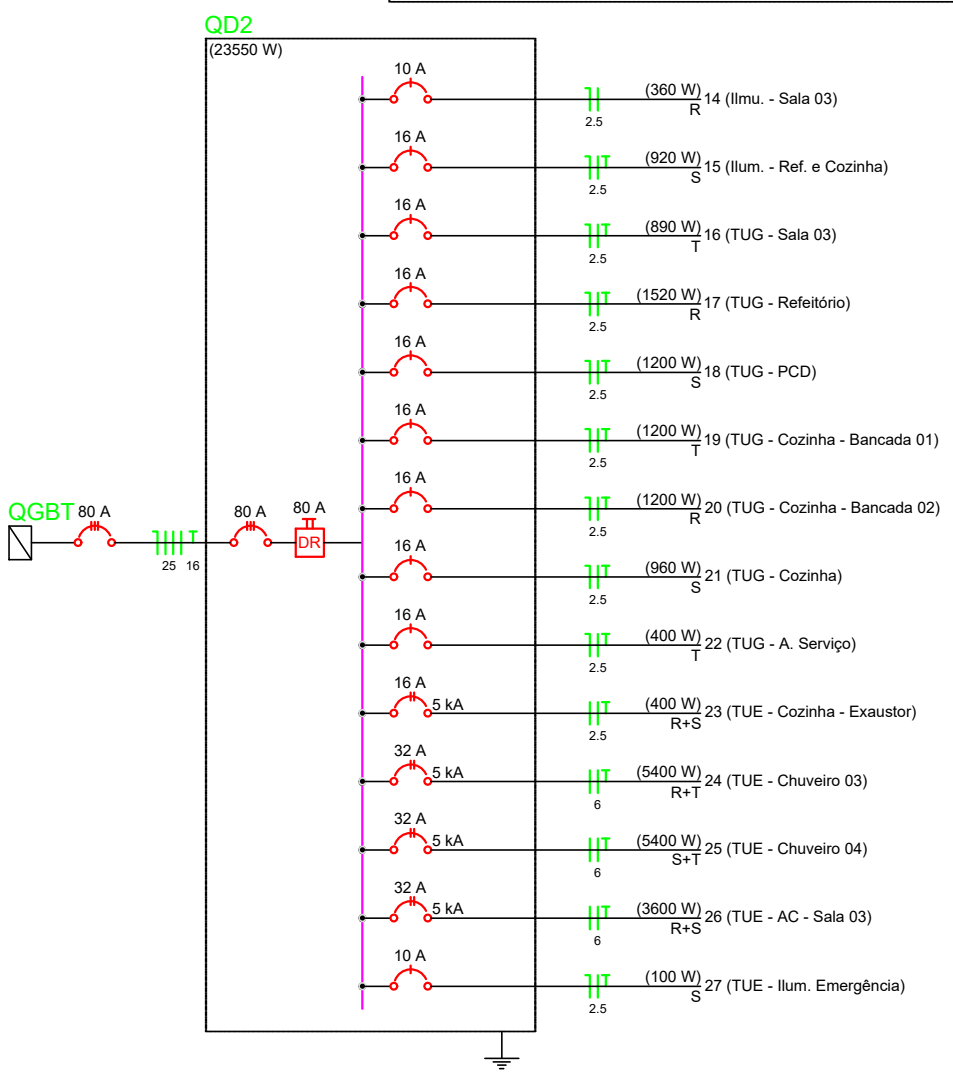
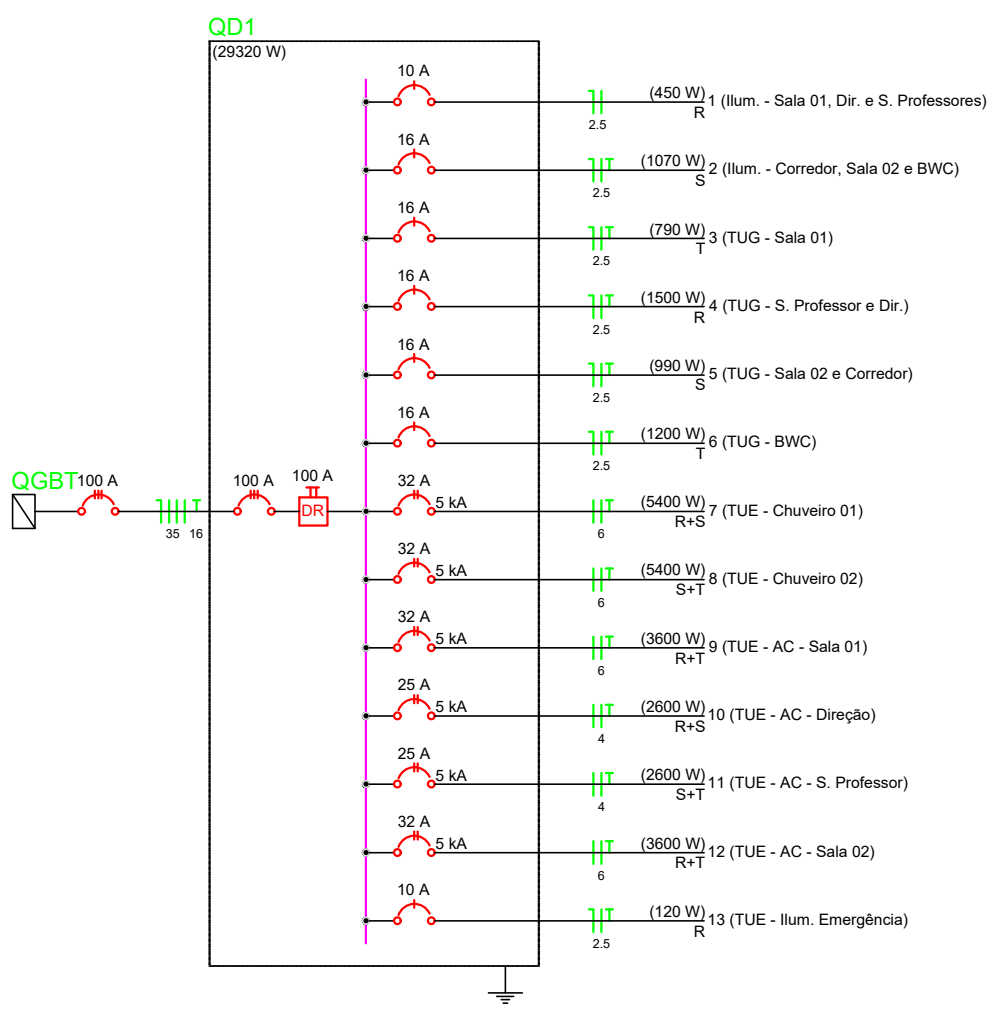
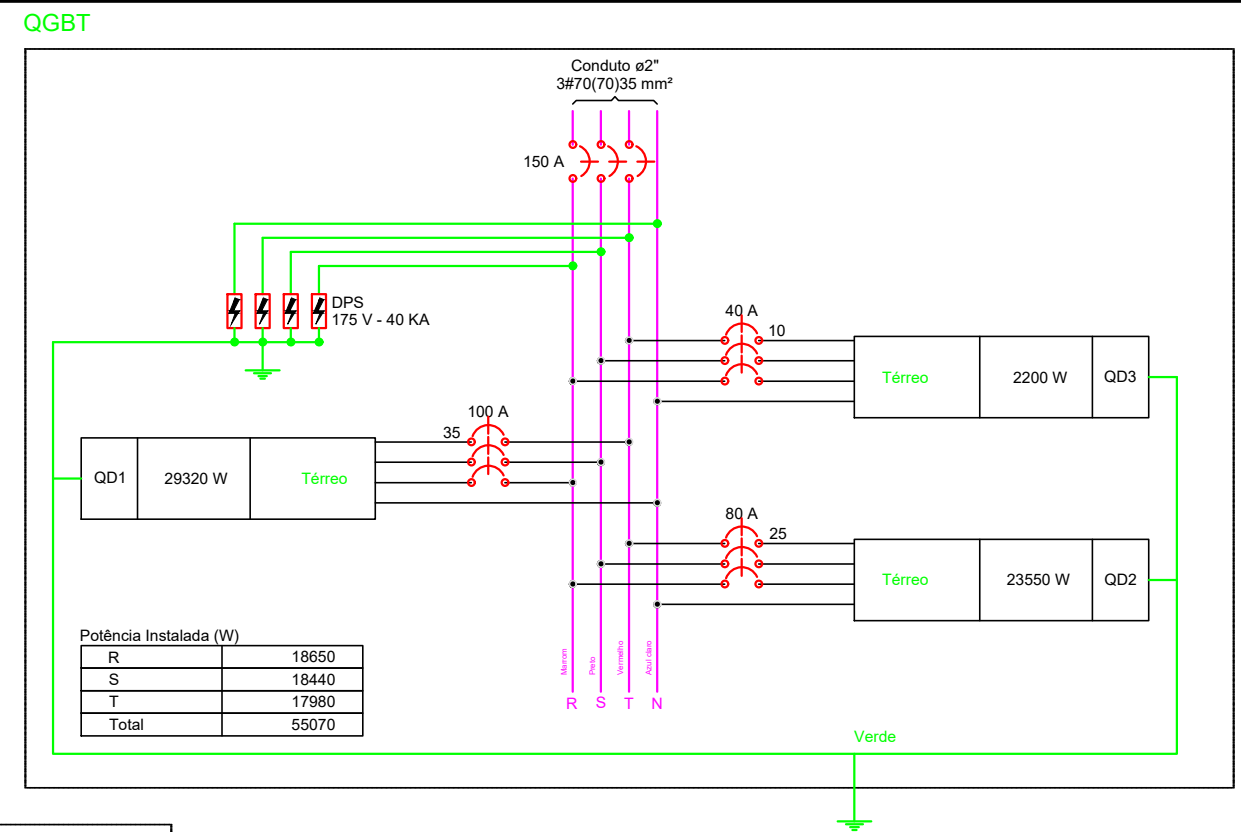
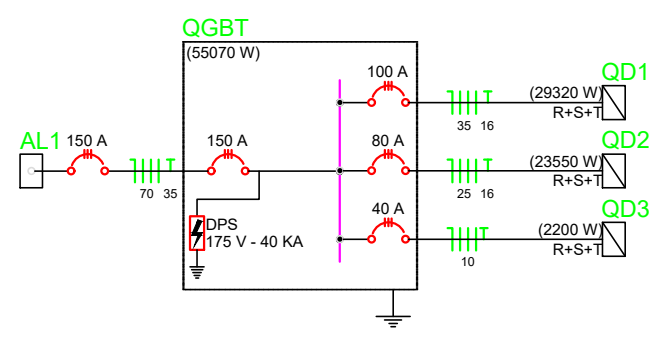


05 DIAGRAMA UNIFILAR E MULTIFILAR S/ESCALA



PREFEITURA MUNICIPAL DE VÁRZEA GRANDE

Av. Castelo Branco, Espaço Municipal, 2500 - Centro Sul, Várzea Grande/MT
CEP 78125-700 - Fone/Fax: 65 3688 8000

LOCALIZAÇÃO: EMEB MARIA DE LOURDES TOLEDO AREIAS
AV. PRINCIPAL, S/Nº, DISTRITO PRAIA GRANDE, VÁRZEA GRANDE - MT

ASSUNTO:
DRENO
AR CONDICIONADO

DATA:
JUN/2021

UNIDADE:
Metro

ESCALA:
S/ESC

PROJETO: REFORMA E AMPLIAÇÃO DA EMEB MARIA DE LOURDES TOLEDO AREIAS

AUTOR DO PROJETO:

ISRAEL ROSBERG COSTA
ENGENHEIRO ELETRICISTA CREA-MT 048484

FOLHA:

5/5